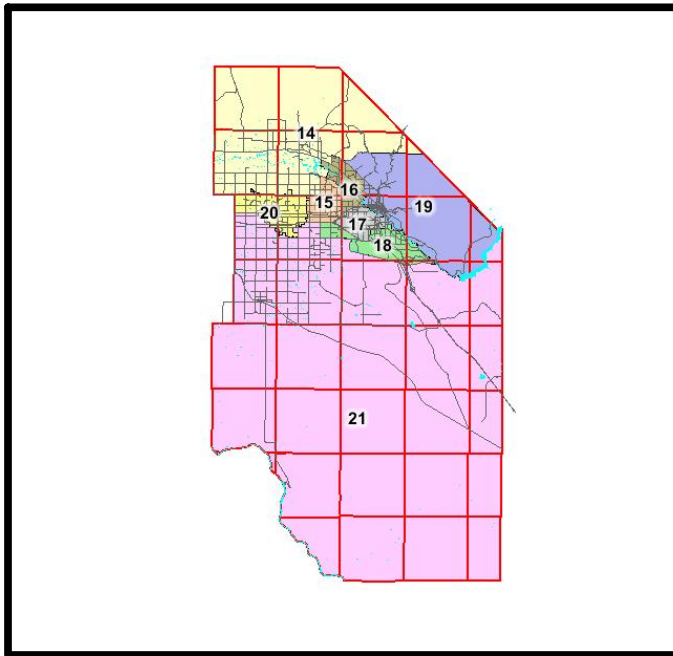


HOW TO TAKE FULL ADVANTAGE OF THE ADA COUNTY ELECTIONS ONLINE MAPPING SYSTEM



The Online mapping system that is available at www.adaweb.net/Elections is designed to assist Ada County voters and candidates in determining voting district information within the county. Due to the nature of the online mapping system some information may not be fully up to date. For specific district information or maps please contact the Ada County Elections office at 287-6860.

Disclaimer:

The information provided on the Ada County Elections mapping website is to be used only for reference purposes. The map and data are compilations of records.

Ada County does not warrant the accuracy, reliability or timeliness of any reproduction of the information in this system, and shall not be held liable for any losses caused by using this information. Any person or entity that relies on any information obtained from this system does so at his or her own risk.

What would you like to do?

1. Find where you go to vote
2. Find out what precinct you are in
3. Get a map by typing in the precinct
4. Get a map by typing in the legislative district

There are three ways to get a map:

For 1. & 2. Follow directions for OPTION 1

For 3. Follow directions for OPTION 2

For 4. Follow directions for OPTION 3

OPTION 1 FINDING A MAP BY STREET ADDRESS

Step #1 Type in the address that you would like the map for
(When applicable include N.,S.,E.,W., St., Ave., Ct., etc.)

Step #2 Click on “Find Address”

A screen will pop up and have your street and possibly other same-name streets in blue font. Click on your specific address.

After a few moments a map should appear on the right hand side of your computer screen of the address you typed in and the surrounding areas.

◁Do not be alarmed by all of the information that comes up on the map. Simply click on your address (the big yellow dot) and the map will zoom in.

You may continually clicking on the area to keep zooming in

OPTION 2 FINDING A MAP BY PRECINCT

Step #1 Below “Zoom to Precinct” type in the box the precinct number then click on “Find Precinct”. After a few moments a map should appear on the right hand side of the screen of the precinct and surrounding areas.

OPTION 3 FINDING A MAP BY LEGISLATIVE DISTRICT

Step #1 Scroll down past “Zoom to Address” and “Zoom to Precinct” until you get to “Zoom to Legislative District”, see picture below. Then enter your legislative district in the box below the words “Zoom to Legislative District”, then click on “Find District”.

-After a few moments a map should appear on the right hand side of the screen of the legislative district and the surrounding area.

HOW TO NAVIGATE THE MAP:

- 7 icons are located in the top left hand corner of the screen
- TO USE THESE ICONS (1) click on the icon (2) then click on the map with that icon

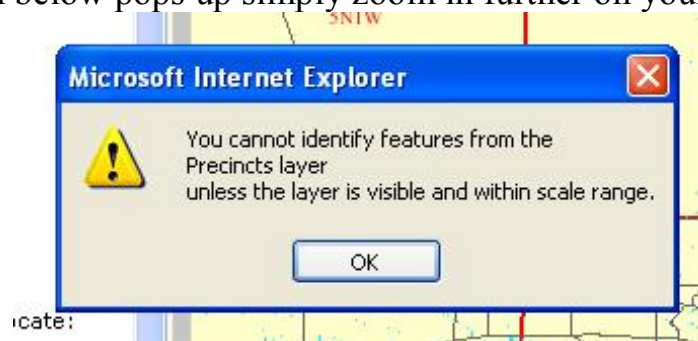


This is the INFORMATION icon.

This is a really informative tool, which will lead you to all of the information you are probably looking for.

**This icon will show you the precinct number, legislative district, polling place (where to vote), address of the location, senator for the district, contact information, two representatives and contact information.

If the screen below pops up simply zoom in further on your map





This is the ZOOM icon. This allows you to see a more detailed map. You can get a more and more detailed map by clicking on the icon and then clicking multiple times on the map. Another way to zoom is to click and pull in any direction to make a square. The square that is drawn will be the area that gets zoomed in on.



This is the ZOOM OUT icon. By clicking on this icon and then clicking on the map, the map will become less detailed and show more area.



This is the FULL EXTENT icon. Clicking on this icon and then clicking on the map will take you to a general map of ADA County.



This is the PAN icon. By clicking on this and then clicking on the map it will enable you to move the map in any direction.

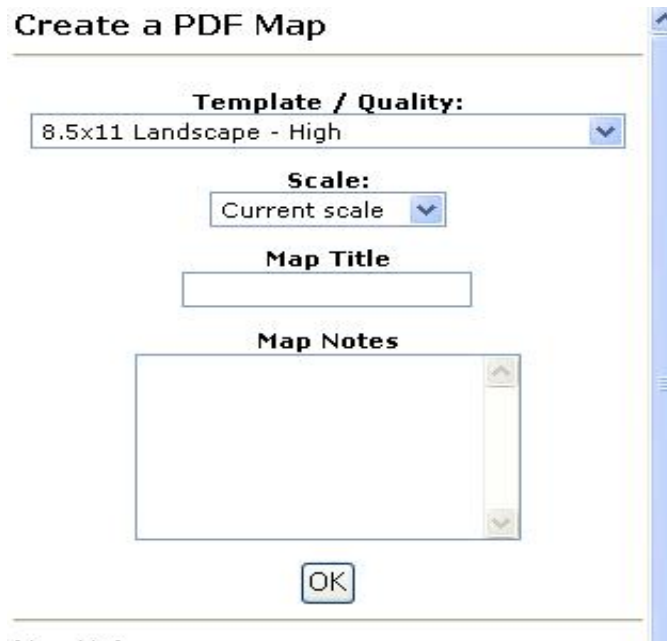


This is the FIND STREET ADDRESS icon. If you would like to return to the main screen where you can type in an address simply click on this icon.



This is the PRINT icon. If you would like to print the map on your screen click on this icon.

>A box will appear titled “Create a PDF Map” as seen below



This box is allowing you to choose which kind of map you would like.

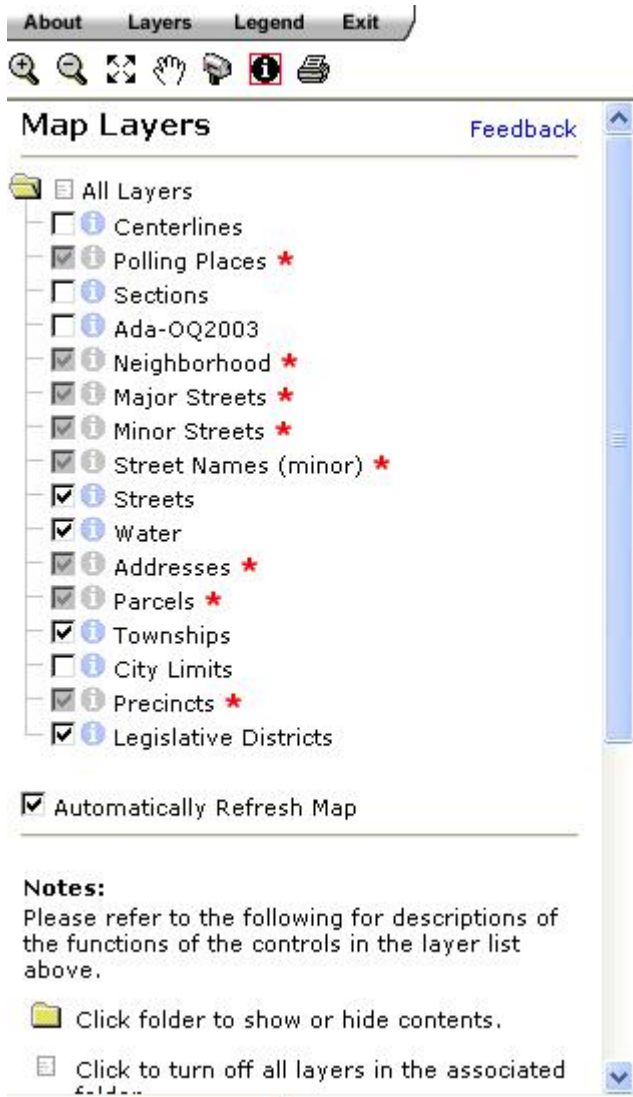
You may name the map by typing in the desired name in the box below the words “Map Title”.

(1) If you want to print the map “as is” just click “OK” at the bottom of this box on your computer.

(2) If you would like to adjust the map there are two ways to do so. 1. Click on the down-facing arrow to the right of the words “8.5x11 Landscape – High”. This will then present different printing options. Choose which printing option you prefer. 2. To change the scale, click on the down-facing arrow to the right of “Current Scale” and a list will appear. Click on the desired scale. After click on “OK” to print your map.

SPECIALTY MAP OPTIONS

There are even more ways to get more helpful information from these maps. This can be explored on the top left hand corner of the screen under “Layers”. Click on layers and the screen below will pop up:



Specialize the map with the “Layer” options

For example:

>* To see ARIEL PHOTOS click on the “Ada-OQ2003” box

>* To highlight the city lines on your map click on the “City Limits” box

-Red Stars will zoom in your map as far as it can go in the current layer

-Under the “Notes” section there is a list of options regarding how to get further details on your map