



ADA COUNTY SERVICES





*Commissioner
Rick Yzaguirre
District 2 Chairman*



*Commissioner
Judy Peavey-Derr
District 1*



*Commissioner
Fred Tilman
District 3*

A Message of Thanks

As members of the Ada County Board of Commissioners, we would like to thank you for your interest in learning more about Ada County government. We are confident you will find this brochure full of helpful facts, figures, and statistics as they relate to Ada County's six other elected offices and the various specialized county departments that are designed to meet the county's expanding needs.

Record growth in Ada County continues to capture headlines and our goal as the Board of Commissioners is to always maintain a team of skilled professionals who can efficiently service county taxpayers and manage the complex issues created by explosive growth.

Please take a moment to read more about the exciting new initiatives and programs that are enhancing our quality of life. From a new Justice Center aimed at helping crime victims get the services they need, to an exciting new revenue source for Ada County that converts landfill gas into electricity, we're proud of the work being done to ensure Ada County remains an incredible place to call home.

Sincerely,

Ada County Commissioner Rick Yzaguirre
Ada County Commissioner Judy Peavey-Derr
Ada County Commissioner Fred Tilman

ADA COUNTY MISSION STATEMENT

Our vision is to be partners in our communities, to provide leadership, and to promote values that sustain our quality of life.

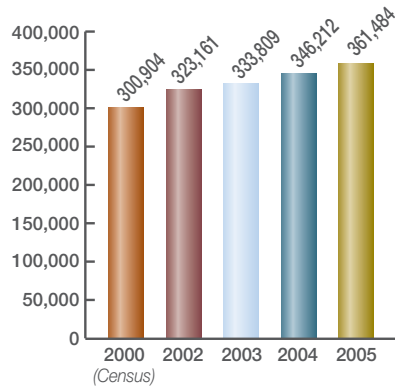
ADA COUNTY GOVERNMENT

There are currently nine elected Ada County officials who oversee the operation of seven political offices.

All political offices are run independently from one another except in terms of overall budget. Budget benchmarks are set and monitored by the Ada County Board of Commissioners.

The Board of Ada County Commissioners oversees 15 Ada County departments and more than 1,500 dedicated employees.

ada county population estimates



(The estimates for 2002-2005 are based on reports published by COMPASS)

interesting ada county facts

- ¥ *The surface area of Ada County takes up 1054.99 square miles*
- ¥ *The average age of an Ada County resident is approximately 33.95 years old*
- ¥ *The median household income in Ada County is approximately \$46,140*
- ¥ *Average commute time to work in Ada County is 19 minutes*
- ¥ *Ada County was named after Ada Riggs, the daughter of H. C. Riggs, one of the founders of Boise*

(Information from 2000 Census)



Gary Raney, Sheriff

ADA COUNTY SHERIFF

Despite tremendous growth, Ada County has maintained a crime rate that is well below the national average. Keeping our communities safe by preventing and solving crime is the mission of Ada County Sheriff Gary Raney. Under the Sheriff's direction, the Sheriff's Office also provides law enforcement services for the communities of Eagle, Kuna, and Star.

- ¥ Crime rate below national average 38.9 per 1,000 in 2005
- ¥ Average law enforcement cost per resident in Ada County's contract cities is \$61 vs. the national average cost per resident of \$179

Enhanced Alternative Sentencing programs have helped reduce growing inmate housing costs. Unique programs such as Ada County's Work Release, Electronic Monitoring, Inmate Workers, and the Sheriff's Inmate Labor Detail not only help reduce jail expenses, they also give inmates an opportunity to work and support their families.

- ¥ Alternative Sentencing generated \$839,099 in revenue in 2005
- ¥ Alternative Sentencing reduced the number of inmate days by 11.7 percent and saved \$66,947 in food and supplies



911 COMMUNICATIONS DISPATCH CENTER

The 911 Communications Center provides dispatch services for all law enforcement and emergency response agencies in Ada County. The Sheriff's Office has taken the lead in preparing a plan to convert all emergency radio frequencies to a 700 MHz system. As the recent natural disaster in New Orleans illustrated, in times of crisis, it is imperative all inter-agency emergency responders have the ability to communicate with one another.

Protecting our citizens

ADA COUNTY JAIL – MEDICAL EXPANSION

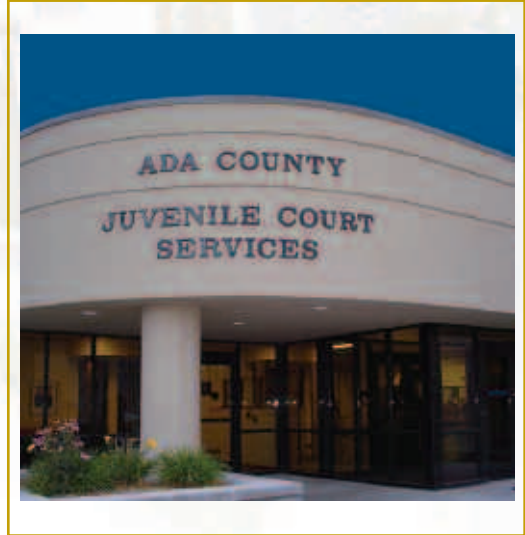
While Ada County's crime rate is low, the growth of inmates housed in the Ada County Jail is up 30 percent from five years ago. Ada County has committed to expanding the jail medical facility to enhance medical, mental health and drug and alcohol detoxification services. This addition greatly reduces liability to the county. The new 41 bed medical facility will enable the Ada County Jail to provide more direct care to its growing inmate population.

JUVENILE COURT SERVICES

Considered one of the finest juvenile courts in the nation, Ada County Juvenile Court Services provides help for troubled youth. These unique programs hold a juvenile accountable, while ensuring the protection of the community.

A few of the alternative and preventative programs include:

- ¥ Domestic Violence Unit for youth who are victims and offenders
- ¥ Detention Alternatives provide conditional release
- ¥ Work and Learn program partnership with Boise School District and Idaho Youth Ranch
- ¥ Substance abuse and drug/alcohol education and treatment
- ¥ Electronic monitoring, in-home arrest and community supervision



Juvenile Court Services Bass Fishing Tournament.

ADA COUNTY PROSECUTOR

Ada County Prosecutor Greg Bower's office has a welcoming environment for victims, citizens and law enforcement officers. Mr. Bower is proud of the fact that he has the most experienced staff of any Prosecutor's Office in the state of Idaho. They are professional, aggressive, fair and old-fashioned in their attitudes toward holding offenders accountable for criminal conduct. Mr. Bower has a progressive and innovative approach toward special victim cases and the needs of those who have been harmed by criminal conduct



*Greg Bower
Prosecutor*

2005 cases filed/opened

Felony	2,498
Misdemeanor	4,361
Traffic	16,395
Child Protection	200
Juvenile	3,512
Civil	1,357
TOTAL	28,323

DRUG UNIT

The Ada County Prosecutor's Office works hard to rehabilitate drug users with the award winning Drug Court.

CHILD ABUSE, SEXUAL ASSAULT & JUVENILE UNIT

The Child Abuse, Sexual Assault and Juvenile Unit is comprised of advanced, elite prosecutors who specialize in dealing with children and child victims.

DOMESTIC VIOLENCE UNIT

The DV Unit is dedicated to improving the quality of the lives of children and their families, ending the cycle of violence. The unit not only seeks to hold offenders accountable, but provides victims with the opportunity for early intervention.

Lower crime
Helping victims
of crime



ADA COUNTY FAMILY ADVOCACY CENTER & EDUCATION SERVICES “FACES”

The Ada County Commissioners, Prosecutor Greg Bower, Ada County's local law enforcement and prosecution agencies, St. Luke's and Saint Alphonsus Regional Medical Centers, and several other local agencies have collaborated to open a safe and secure one-stop assistance center to handle domestic violence, child abuse and adult sexual assault crimes. This Family Advocacy Center is scheduled to open this summer.

The unique one-stop approach to better serve our most vulnerable crime victims will co-house several agencies:

- ¥ Law Enforcement, Prosecutors, Investigators
- ¥ Victim-Witness Coordinators who provide victim services
- ¥ Health care services, forensic and medical evaluations
- ¥ Idaho Department of Health & Welfare personnel
- ¥ Resource referrals and information
- ¥ Stress-free response in a safe victim-friendly environment

FACES will coordinate and respond expeditiously to child abuse, domestic violence and sexual assault cases at all levels, from investigation through prosecution.

A strong local, state, and federal partnership aided by U.S. Senator Mike Crapo's effort to obtain a \$1 million dollar HUD grant helped make this effort for victims of domestic and sexual crimes a reality.



Ada County Commissioners at facility during remodeling.

ADA COUNTY CLERK/AUDITOR/RECORDER

Under the guidance of Ada County Clerk Dave Navarro, the 123 members of his clerk, auditor and recorder staff perform a variety of tasks:

- ¥ Prepare the county's annual budget (\$160M in FY 06)
- ¥ Receive county revenues and pay the county's bills
- ¥ Develop the county's proposed levy
- ¥ Process the bi-weekly county payroll
- ¥ Provide in-court support for all judges in the county
- ¥ File, process and receipt of matters related to the court
- ¥ Record documents related to all land transactions in the county
- ¥ Conduct county, state and federal elections
- ¥ Issue marriage licenses



Dave Navarro
Clerk/Auditor/Recorder

In the future, the Clerk's Office is looking to partner with the Idaho Supreme Court to accept credit and debit cards for payment of court fines and fees. Additionally, the Clerk's Office will invest in technology that will give the public the ability to search county land records on-line. Title companies will use this same technology to electronically record certain land record transactions.

ADA COUNTY TREASURER



Lynda Fischer
Treasurer

The Ada County Treasurer's Office quietly continues to serve the residents of Ada County by refining its billing and collection processes with new technology and experienced staff. In 2005 electronic checks were added as a payment option that was well received by taxpayers. Our banking partners in the community continue to offer more efficient and cost-effective services, as well as rising interest rates on investments; all of which allow better service without increasing costs of operation or additional employees.

The Treasurer's Office has expanded its website to include property tax information. There is a link on the Treasurer's Department home page at www.adaweb.net, to the on-line property system.

In 2005, Ada County held its first on-line auction of Tax Deed Properties through Bid4Assets, streamlining the sale process and making the auction process available to a wider audience.

ADA COUNTY ASSESSOR

The Ada County Assessor is using technology to help make doing business in Ada County easier for taxpayers. Explosive growth has prompted the Assessor to provide a wide variety of services over the internet. This use of online technology means more than 3,000 Ada County residents a month can conduct their county business without having to drive to the courthouse or wait in long lines.



*Bob McQuade
Assessor*

These statistics exhibit the type of growth Ada County Assessor Bob McQuade and his staff experienced in 2005:

- ¥ 8,200 new subdivision lots platted with new homes
- ¥ 150,000 parcels of real and personal property appraised in 2005
- ¥ 4,000 walk-in customers a week at the four Motor Vehicles outlets county-wide
- ¥ 19,000 Homeowner's Exemption applications processed last year
- ¥ 1,200 visits per day on the Assessor's website & property information systems
- ¥ Circuit Breaker program paid over \$2.2 million in taxes for 3,258 homeowners

HI-TECH MAPPING

The Ada County Assessor's Office uses Geographic Information System (GIS) technology to manage information as it relates to property ownership and property boundaries. This GIS mapping technology is extremely accurate and providing key information for:

- ¥ Ada County's E-911 Dispatch Center and law enforcement crime analysis
- ¥ Ada County voting precinct boundaries
- ¥ Addressing, permitting, and other analysis by Ada County Planning and Development Services
- ¥ Idaho Power Corporation

Using
technology



*Erwin Sonnenberg
Ada County Coroner*

ADA COUNTY CORONER

Ada County Coroner Erwin Sonnenberg provides service to all of Ada County and is responsible for the investigation of approximately two-thirds of all deaths in the county. The Coroner's office has just become accredited with the International Association of Coroners and Medical Examiners.

ADA COUNTY DEVELOPMENT SERVICES

The county's Development Services Department is a team of highly skilled planners, architects, building officials, inspectors, and engineers working together with the public to help manage and process future development.



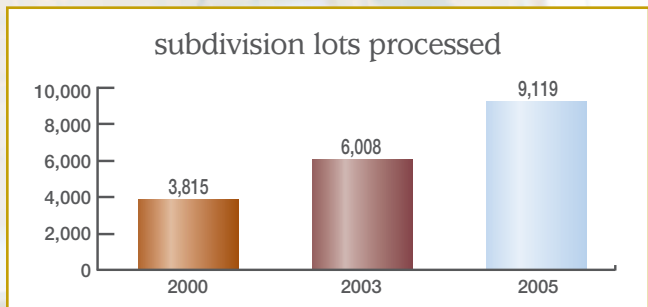
Ada County has experienced tremendous growth. According to the Community Planning Association (COMPASS), the county population grew 46 percent over the past ten years. Ada County and its six cities are anticipating this continued level of growth for the next 20 years.

Planning staff has kept up with the increased demands of growth and staffing through fees collected by the services they provide and not by relying on taxpayer dollars.



Improved customer service through expediting the permitting process, tracking applications online and utilizing technology are some of the new changes that make doing business easier for Ada County residents.

GROWTH AND PROCESSING STATISTICS



REGIONAL PARTNERSHIPS AND COOPERATION

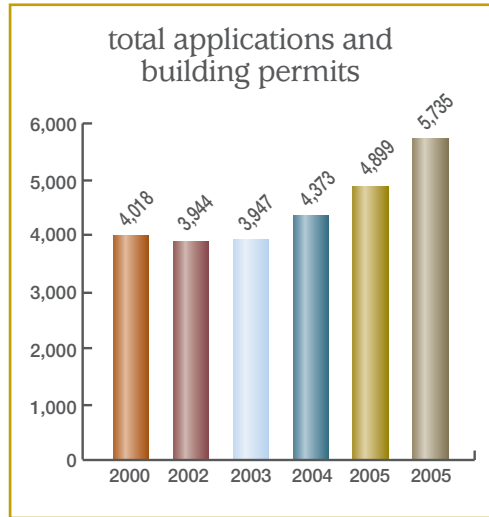
Ada County officials and the development services staff are actively involved in working with the six cities, service districts, and citizens as the community deals with challenging growth and planning processes.

These include major planning efforts like Blueprint for Good Growth, Communities in Motion, State Street Corridor, Payette Scenic Corridor, Treasure Valley Electrical Plan, Three Rivers Crossing and Oregon Trail preservation.

COMPREHENSIVE PLAN

More than ever before, Ada County must have a strong vision for our future. The major revision of Ada County's Comprehensive Plan, last updated in 1996, is underway and is the vision statement for future development. It provides the framework and guides policy decisions for future land use, preservation of open space, parks and recreation, transportation, and protection of valuable resources.

The timing of the comprehensive plan is intended to coincide with the Blueprint for Good Growth and Communities in Motion planning studies and will incorporate the results of these and other efforts. Ada County actively supports and participates in these planning studies and has made significant financial contributions to the process.



PUBLIC INVOLVEMENT

Input from Ada County residents is essential in shaping a plan that reflects their values and vision for the future. Numerous public meetings have been held with many more scheduled during this process.



Public meeting for the North Ada County Foothills Plan — over 100 in attendance.

BARBER PARK

Ada County's most popular park for everything from floating the Boise River to watching wildlife is getting even better. Barber Park has expanded its tube rental facilities, added new equipment, and expanded greenbelt trails to accommodate the more than 120,000 people who visit annually.

The new energy-efficient buildings and easy access layout encourages conservation, while reducing wait times for customers. The expanded facilities will soon be joined by an Interpretive and Education Center for outdoor learning activities. With its attached gazebos, this area will be a popular spot for special community and school events and activities.



The “green roof” is just one of the many energy saving features at the new facility.

FOOTHILLS, OPEN SPACE AND TRAILS

Foothills Trails

From the Boise Foothills to the Oregon Trail, access for hikers and bikers is paramount to the Ada County Parks and Waterways Department. Expanded recreational opportunities in Ada County include a 13-acre conservation easement along the Oregon Trail and a new trail head parking area that will soon be built at the Seaman Gulch trail head.

Plans also include expanding the Eckert bike path and trail system between Surprise Valley and Barber Park. Discussion about a long-term plan to develop Hubbard Reservoir into a natural wildlife preserve and recreation area in southern Ada County are on-going between Ada County and various other governmental agencies.



WEED & PEST CONTROL — MOSQUITO ABATEMENT DISTRICT

Protecting the value of our land and resources by controlling or preventing the spread of noxious weeds is the mission of Ada County Weed and Pest Control. Noxious weeds degrade wildlife habitat, agricultural viability, waterways and commercial property. They not only contribute to a monetary loss but can alter the environment to the detriment of native or desirable plants, animals and insects.



MOSQUITO ABATEMENT DISTRICT

The Mosquito Abatement team has a complete pest management plan and strategies in place that are suited for the environment of Ada County. Ada County has successfully eluded West Nile Virus and prevention plays an important role. Survey and mapping of mosquito breeding sites allows for the treatment of 406 square miles and monitoring over 1,600 ponds weekly.

New handheld Global Positioning System devices will allow the department to pinpoint locations where mosquitoes identified as carriers of West Nile have been found. This summer, residents can routinely monitor those areas where extra safety precautions should be taken by going to the mosquito abatement's website to view the weekly updates.



MOSQUITO ABATEMENT PREPARES TO MOVE TO MERIDIAN CAMPUS

The 11.5 acre Meridian Campus site will allow the county to respond to inevitable future growth for county services that may need to be located in Meridian. The campus will provide a new home for Weed and Pest Control and the Mosquito Abatement District office.

Some infrastructure construction, including some utilities, sidewalks and roadways is already underway. LEED energy-saving design standards will be incorporated in all future facilities.

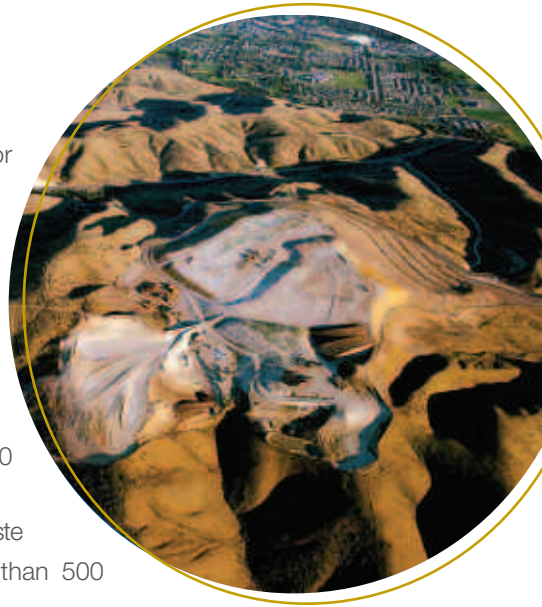
solid waste management

ADA COUNTY LANDFILL

Planning for the future means planning for growth and Ada County is home to one of the most ecologically successful landfills in the nation. Hazardous material management programs, wood waste recycling programs and environment compliance activities govern daily operations of the landfill.

During this past year the landfill has:

- ¥ Managed disposal of more than 457,000 tons of municipal sold waste
- ¥ Recycled more than 35,000 tons of wood waste
- ¥ Managed disposal or recycling of more than 500 tons of household hazardous waste
- ¥ Recycled more than 300 tons of computer monitors and televisions
- ¥ Destroyed more than 578 million cubic feet of potent landfill gas
- ¥ Installed more than 5,000 feet of landfill gas extraction pipes
- ¥ Offered several free services to the community



NO TAX DOLLARS

This department relies solely on user fees, not taxpayer dollars, to fund operating costs, and has won numerous national environmental awards for its operation.

NORTH CELL RAVINE — 100 YEAR PLAN

The 100 year plan for developing the North Cell Ravine has begun and it will provide long-term solid waste disposal capacity for all of Ada County. Certification has been received from the Idaho Department of Environmental Quality for landfill design. Construction is expected to begin in March 2006.

RECYCLING PROGRAMS

Ada County Landfill boasts the largest urban recycling program of its kind in Idaho where 100 percent of residents can take advantage of handy curbside recycling programs for paper, cardboard, plastics, and newsprint.



ADA COUNTY LANDFILL GAS TO ENERGY

Green Power Project Creates Electricity for 2,400 homes

Ada County Commissioners are proud to announce the development of the Hidden Hollow Landfill Gas-to-Energy Project with G2 Energy LLC. Ada County will sell the methane gas emissions generated at the landfill to G2 Energy which will use it to power two generators situated at the landfill. The facility will produce enough electricity to power 2,400 homes.

G2 Energy will fund the entire project at no cost to Ada County taxpayers. The facility will be operational this year.



ENVIRONMENT BENEFITS

- ¥ Annual benefit equal to removing emissions from approximately 25,000 vehicles or planting 36,000 acres of forest
- ¥ Promotes the use of landfill gas as a renewable green energy source

operations



Ada County Operations ensures that county-owned facilities are properly built, consistently maintained, and operating at peak performance. Green building standards promote sustainability and energy efficiency measures are implemented to conserve energy, control utility costs and maintain building efficiency.

ADA COUNTY ENERGY INITIATIVES AND SUSTAINABLE CONSTRUCTION AWARDS

- ¥ 2004 & 2005 ENERGY STAR Award for Ada County Courthouse
- ¥ 2005 LEED Silver Certification for Ada County Courthouse
- ¥ Green Roof on new Barber Park Administration Building
- ¥ LEED design and construction of new Weed, Pest and Mosquito Abatement Facility
- ¥ Storage and Collection of Recycables at all major facilities
- ¥ Construction Waste Management Program for all construction projects





ADA COUNTY PARAMEDICS — 31 YEARS OF SERVICE

People's lives often depend on the skill and expertise of Ada County Paramedics. They maintain stringent medical standards to ensure the optimum patient care is provided through leading-edge technology and continuing education. Ada County effectively extends the reach of the hospital emergency room into the streets and homes of Ada County, providing vital attention to the sick and injured.

- ¥ Responded to 18,268 emergency medical calls in FY2005 compared to 17,513 in FY 2004
- ¥ Provided medical care to 18,557 patients
- ¥ Treat patients from newborns to over 100 years old



A NEW WAY OF DOING BUSINESS

Ada County Paramedics are meeting the challenge of growth and increasing demand for services by emphasizing a system in which the user pays, creating a decrease in tax dependency. Only 30 percent of the paramedics' budget is funded by property tax dollars. Federal and state grant funding, along with local hospital partnerships also contribute to the efficient business model and increase financial stability.

NEW INITIATIVES

The Ada County Paramedics Department is creating a membership program this year to further increase non-property tax funding. This program provides a way to voluntarily support the community's emergency medical service and receive a valuable benefit in return.

ada city-county emergency management



The Ada City-County Emergency Management Team (ACCEM) is responsible for local disaster preparedness and plays a pivotal role in administering Homeland Security grants for emergency responder planning, training and equipment opportunities. They work closely with local, state and federal agencies to help our community prevent, prepare for, respond to and recover from disasters and emergencies.

ACCEM is a unique inter-governmental agency established through a joint powers agreement to provide public safety services to Ada County, the Ada County Highway District and the cities of Boise, Eagle, Garden City, Kuna, Meridian and Star.

Primary Goals Include:

- ¥ Identify hazards and risks that may affect residents of Ada County
- ¥ Develop inter-governmental emergency response plans
- ¥ Coordinate and conduct disaster drills and exercises
- ¥ Provide public education and information on personal safety



expo idaho & western idaho fair



Fair attendance in 2005 was approximately 250,000 people.

EXPO IDAHO

Expo Idaho, home of the Western Idaho Fair, is located along the Boise River with a footprint of approximately 240 acres. Expo Idaho is a year-round venue offering vendors a total of seven buildings and facilities. Ada County is proud of its facility that provides the majority of social, educational, and entertainment services for county citizens at no cost to taxpayers.

Expo Idaho facilities host numerous events including trade shows, animal shows, special events, and RV shows to name a few of the approximate 125 events held each year. The name change to Expo Idaho helps reflect these events. The Boise Hawks, a minor league baseball team, also calls Expo Idaho home. The average annual attendance for the entire facility is close to one million people!

WESTERN IDAHO FAIR

Each summer for 10 fun-filled days, Expo Idaho hosts the Western Idaho Fair, Idaho's largest event. The fair promotes agriculture education, family enjoyment, and entertainment for the entire Treasure Valley.

CAPITOL RACING AT LES BOIS PARK

Live horse racing and the legacy of Idaho's horse industry has a bright future at Les Bois Park as Ada County Commissioners have signed a lease and operation agreement with Capitol Racing. The lease brings more than a 1,000 percent increase in revenues over the previous operation and guarantees jobs and racing's future in Idaho.

Residents will also enjoy improvements to Les Bois Park which include track and infield restoration and improved handicapped access. These come at no expense to the taxpayer.





1ST ANNUAL MAKING HISTORY AWARD

The County has established the Making History Award as a way of recognizing people or organizations whose actions create a lasting legacy for Ada County. The Board of Ada County Commissioners announced J.R. Simplot as the recipient of the first-ever Making History Award. The spirit of his contributions is summed up by one of his favorite quotes... We want to do our share.

J.R. Simplot has distributed his generosity around the state of Idaho, the Pacific Northwest, and elsewhere around the world, but his home is in Ada County. Here, for more than half a century, he has given in ways that build, educate, improve, and solve problems. His generous contributions have strengthened the fabric of our community.

J.R. Simplot has indeed been making history in Ada County.



J.R. Simplot

The Board of Ada County Commissioners would like to offer a special thank you to the hardworking individuals who serve on the following Voluntary Advisory Boards. These Boards play an integral role in providing advise to the Ada County Commissioners.

Central District Board of Health, Board of Community Guardians, Emergency Medical Services Advisory Board, Historic Preservation Council, Boise City/Ada County Housing Authority, Mosquito Abatement Committee, Planning and Zoning Commission, Public Safety Communications Board, Waterways Advisory Board and the Western Idaho Fair Advisory Board.

Ada County Elected Office and Department Phone Directory

Administrative Services	287-7130
Assessor	287-7200
Civil Defense (<i>see Emergency Management</i>)	
Clerk/Auditor/Recorder	287-6840
Commissioners	287-7000
Coroner	287-5556
Development Services	287-7900
Emergency Management	577-4750
Expo Idaho	287-5650
Indigent Services	287-7960
Information Technology	287-7020
Juvenile Court	577-4800
Mental Health	287-7988
Operations	287-7100
Paramedics	287-2950
Parks and Waterways	577-4575
Prosecuting Attorney	287-7700
Public Defender	287-7400
Public Information	287-7014
Sheriff's Office	577-3000
Solid Waste Management	577-4725
Treasurer	287-6800
Trial Court Administration	287-7500
Weed and Pest Control	577-4646

For more information about the above offices and departments, visit our website at: www.adaweb.net



**200 West Front Street
Boise, Idaho 83702**