

Ada County Mosquito Abatement - Surveillance

Ada County Mosquito Abatement District has approximately 50 fixed trapping locations countywide to determine the threat level of West Nile virus. Each week, trapped adult mosquitoes are collected, identified and tested for the presence of West Nile. Those results help prioritize future adult mosquito control procedures. Residents can see the results of this weekly testing (and learn whether West Nile virus has been found in the area) by visiting the Ada County Online Mosquito Tracker Web site at www.adaweb.net/weedpestandmosquito/mosquitoabatement/onlineMosquitotracker.aspx

Mosquito surveillance is just one step in a comprehensive mosquito abatement action plan that helps reduce mosquito populations and provide for the public health and safety of all Ada County residents.



A close-up of mosquitoes trapped at one of Ada County's fixed trapping locations.

Ada County
Weed, Pest & Mosquito Abatement

975 E. Pine Avenue
Meridian, ID 83642

Ada County Mosquito Abatement - Surveillance



Ada County
Weed, Pest & Mosquito Abatement

Ada County Mosquito Abatement - Surveillance

Trapping & Identification

During the summer, Ada County Mosquito Abatement District crews set approximately 50 surveillance traps in residential, urban and rural areas throughout the county. We use CDC (the U.S. Centers for Disease Control) light traps baited with dry ice to collect adult mosquitoes. Mosquitoes are attracted to humans through exhaled carbon dioxide, so dry ice is an easy and effective method to bait the district's mosquito traps.



Surveillance traps are collected throughout the week, and the trapped mosquitoes are brought back to Ada County Mosquito Abatement offices where they are counted, sorted and identified by species. The district is concerned with the number of *Culex* mosquito species - the primary vector for West Nile in Ada County. These *Culex* mosquitoes are immediately tested for the presence of West Nile virus. When a mosquito test pool returns positive, control efforts in the source area are dramatically increased. One square mile around the source location is treated by the district's control crews to reduce the number of new mosquitoes that hatch and the populations of adult biting, breeding mosquitoes.

When a mosquito surveillance trap returns with an unusually high number of trapped mosquitoes, the area is treated with these same heightened control methods.

Surveillance Mapping Locations



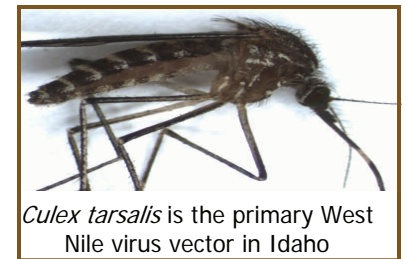
Adult Mosquito surveillance locations are selected for one of two reasons; either the location has an abundant mosquito habitat or the district positions a trap near a high population density. Ada County Mosquito Abatement District also maintains more than 2,700 mosquito breeding locations.

These surveillance areas are mapped using Global Positioning Technology to allow field crews easy access to mapping and treatment information. Whenever possible, sites that foster breeding mosquitoes are treated to permanently prevent future larvae production.

When Disease is Present:

In 2009 Ada County monitored 50 mosquito trap locations district-wide and found 38 positive pools with the presence of West Nile virus. When West Nile is found, not only do we increase control efforts, but the information is posted online. To find out if West Nile has been found in your neighborhood, log on to www.adaweb.net/weedpestandmosquito.aspx and navigate to the Ada County Online Mosquito Tracker.

This Mosquito Tracker map is updated regularly to provide the most current news and information to keep residents safe.



Culex tarsalis is the primary West Nile virus vector in Idaho



Ada County
Weed, Pest & Mosquito Abatement
975 E. Pine Ave., Meridian, ID 83642 : 577-4646