



The best defense against spreading noxious weeds across Ada County starts with you. This brochure will help you learn how best to prevent spreading noxious or invasive weed species to public lands or waterways in Ada County. The first line of defense is simply learning to identify noxious weeds local to Ada County. Visit our online publication library available at: www.adaweb.net/weedpestandmosquito.aspx to learn more about the noxious weeds found in your area. Then follow these simple steps to prevent the spread of noxious weeds.

It's important to report any infestations of noxious weeds immediately. Call our offices at 577-4646, or visit us online to let us know where you've noticed new noxious weeds growing. Working together will help to keep Ada County a great place to live, work and play – all weed free!



Ada County
Weed, Pest & Mosquito Abatement

975 E. Pine Avenue
Meridian, ID 83642



Keep Ada County Weed Free

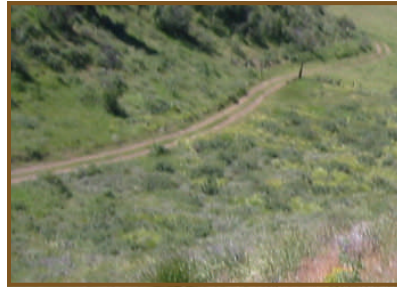


Ada County
Weed, Pest & Mosquito Abatement

Keep Ada County Weed Free

The Trail Recreationist:

- Avoid walking, hiking, biking or using ATVs in areas infested with noxious weeds. You can unknowingly pick up seeds on your shoe or tires and spread them to new areas. Just think of the spread of Puncturevine (aka goatheads) – you don't want to spread more of that weed across Ada County!
- Clean your shoes or boots, tires and vehicles after a trip on the trails
- Check your clothing for any weed remnants including seeds, burrs or stems.
- Your pets can transmit noxious weeds, too. Remember to clean their fur from weed plant parts like burrs, seeds or stems.
- If you see an infestation of noxious weeds, report it immediately to our offices by calling 208-577-4646. Keep an eye out this summer for our new Geocaching program that will help you use the power of GPS technology to report exactly where you see weed infestations on public Ada County land.



The Gardener:



- Some noxious weeds local to Ada County were introduced as ornamental plants. Take for example Purple Loosestrife or Saltcedar – both plants can be found in your home garden. Oxeye Daisy is still sold in commercial wildflower blends. Know what you are buying, and do not buy (or plant) noxious weeds in your garden.
- Remove noxious weeds from your property. Ada County Weed Control has an extensive resource available for residents to learn how best to eliminate noxious weeds from their property. For more information visit www.adaweb.net/weedpestandmosquito.aspx.
- If you need help identifying a weed, call our Weed Control experts at 208-577-4646.



The Fishing Enthusiast or Boater

- Clean your boat and all equipment after your trip and especially before you move it into a new body of water. Allow your boat to thoroughly dry.
- Know your invasive species. Research Eurasian Watermilfoil and the invasive mussel species to avoid introducing these hazardous species to your favorite fishing or boating spots.
- Know that aquatic plant species can regrow from even the tiniest particle. Make sure you aren't spreading noxious aquatic plants with any of your boating or fishing gear.
- While at your favorite water spot, empty your boat and all gear of water collected from your trip. This includes water in live wells, bait buckets, bilge and any other waterways.
- State law requires boaters to purchase and display an Idaho Invasive Species Fund sticker in order to legally launch and recreate in Idaho waters. Inflatable, non-motorized vessels less than 10 feet long are exempt from this requirement. For more information visit : www.parksandrecreation.idaho.gov

